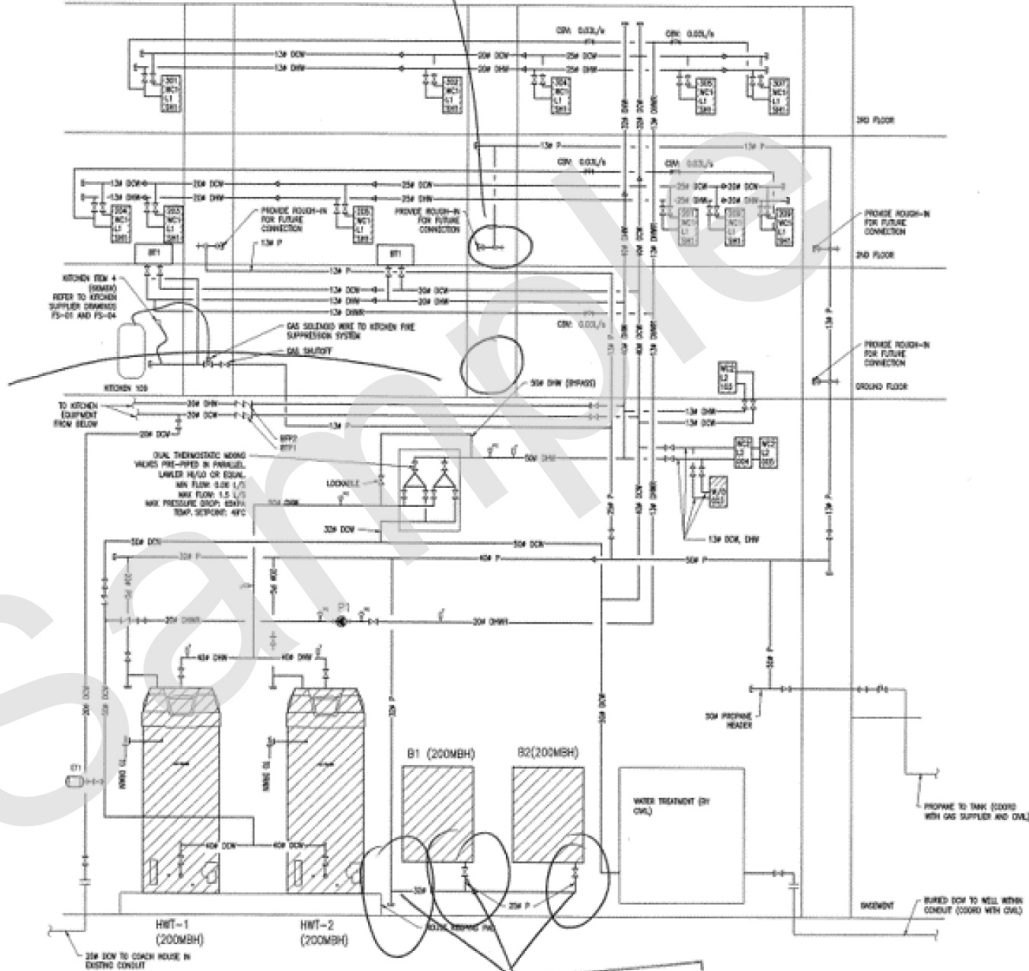


Bid Document Review: Drawing Markup

Comment #
F - 14

Comment #
F - 13



Comment #
F - 12

Bid Document Review: General, Architectural, Landscaping and Structural comments



COLLIERS BID DOCUMENT REVIEW®

General, Architectural,
Landscaping and Structural

COMMENT REFERENCE		SPEC SECTION OR DRAWING NUMBER			REVIEWERS' COMMENTS	CATEGORY OF COMMENT					COST	
Reviewer	Comment Number	Specification Section	Drawing Number(s) or Discipline	Comment Mark on Attached Drawings		Missing Information	Missing Element(s)	Unclear, Ambiguous or Contradictory	Constructability	Designer Review Suggested		Minor
B	153		A860		Drawing 6 provide title.	✓						
B	154		L1-0		Show extent of concrete to be removed at building entrance.	✓						✓
B	155		S01		Show items to be removed, ref drawing D200.	✓						✓
B	156		S02		Explain horizontal hatching.			✓				✓
D	24		A200	Y	Note 21 should indicate two openings of 400x400. See M500.			✓	✓	✓		✓
D	25		A204 Note 6	Y	There is only new gas rough in for future fire place, nothing is shown for venting, confirm requirements.				✓	✓		✓
D	26		A208	Y	There is no drawing A506 in this set, complete detail drawing.			✓				✓
D	27		A300	Y	Does 900x900 louver fit in this location, coordinate with mechanical. See M500.				✓	✓		✓

Bid Document Review: Mechanical and Electrical comments



COLLIERS BID DOCUMENT REVIEW®

Mechanical and Electrical

COMMENT REFERENCE		SPEC SECTION OR DRAWING NUMBER			REVIEWERS' COMMENTS	CATEGORY OF COMMENT					COST	
Reviewer	Comment Number	Specification Section	Drawing Number(s) or Discipline	Comment Mark on Attached Drawings		Missing Information	Missing Element(s)	Unclear, Ambiguous or Contradictory	Constructability	Designer Review Suggested		Minor
E	7		E204		What circuits are to be used for lighting?	✓						
E	8		General Comment		It is assumed that control wiring is by the mechanical contractor. If this is not the case it needs to be clarified.			✓				✓
E	9		E300		Note 3 is not on the drawing.	✓						✓
E	10		E300		Note 9 is not on the drawing.	✓						✓
E	11		E400		The range is only 120V/15A?	✓				✓		✓
E	12		E002/M002		On M002 the basement exhaust fans are shown as 120V but on E002 they are shown as 240V.			✓				✓
E	13		E002/M002		Is the breaker size oversized too much? On M002 it shows it as 7.2HP.					✓		✓
F	12		M305		Review valving arrangement to see if bypass can be achieved.					✓		